

Parent Bulletin

office@willingdonschool.org.uk | 01323 485254



Willingdon
COMMUNITY SCHOOL

18th October 2024



Dear Parents/Carers,

Well done to our wonderful dancers who led our first Dance Show of the year! There is an abundance of talent in this area and we are hopeful we can run another GCSE Dance group for the future Year 10 students.

We have had some fantastic successes in Sport this term. If you follow Facebook or Instagram, you will see that we are winning games every day. Fantastic results and we are very proud of our talented students. Many thanks to our PE team who have organised many fixtures despite having some staff absence in this area.

Many thanks to the Year 11 parents that engaged in our Parents Evening last night. It was very well attended and we hope you have got the right advice and guidance to support students starting their mocks on Monday.

Next week, it is crucial all students are in every single day. I appreciate we are getting closer to the half term but we need to dig deep and keep coming in. We will be teaching right through until Friday at 3pm. There aren't any 'easy' lessons going on that students can afford to miss. Year 11 also start their mock timetable and can not afford to fall behind. I'm sure parents are aware that the government are tightening up on attendance policies and are consulting on any holiday being unauthorised and fined irrespective of length.

We are offering a holiday club for a very reasonable cost. So far, we haven't numbers to run this so if you have missed the notice, it is repeated again in this bulletin.

Please also see below the letter that was sent out earlier this week to you. Thank you for the feedback received so far.

Best wishes,

Emily May
Headteacher

On Tuesday, I met with the Assistant Operations Manager from Stagecoach buses. We have had significant lateness of the buses in Term 1 and this has without doubt affected the smooth start to our school days as well as affected the learning of our young people.

He has apologised for the disruption caused and we are looking at ways we can make the service more efficient. Long term, the times of the buses probably have to change to allow children to get here earlier for the best start to learning. However, this won't happen immediately and we await feedback on their discussions of a more permanent change here.

I have contacted the County Council through my external advisor to explain our concerns with the lateness of buses and the impact this is having on our school and children's learning.

Whilst Stagecoach are fully acknowledging the problem, there are a few things we can do to make up some time so we are more efficient. Tickets can be bought in advance on the app, or the correct money brought with a child onto the bus. Some students are not choosing the first bus - number 58. Instead, they are waking up later or waiting for their friends and catching the second bus number 6 or the third bus number 57. Please can you now encourage your child to catch the first bus, so they are on time to school.

Whilst these are small measures, I urge students and families to work with us to try to protect the teaching and learning which starts at 8.30am.

I am aware that Stagecoach have implied there will be a rise to the fares from the start of November. I am trying to get more information on this, but I suggest if you are not happy given the poor service we have received, that you raise this through their complaint procedure.

Willingdon

HOLIDAY CLUBS

Spooky Season - October Half Term

Weds 30th October 2024

Thurs 31st October 2024

9.30am-2.30pm



Multisport

Basketball, Football, Benchball
Badminton, Table tennis, Just dance

Students welcome from Year
groups 4-8 from all schools

Team Challenges

Taskmaster, STEAM, Photography
Logic Puzzles, Scavenger Hunt Team

Rates

£40 per day per child.
10% sibling discount
PP students attending year 7 or 8 at
Willingdon Community school 50%
discounted rate

All enquiries to holidayclubs@willingdonschool.org.uk

[Click here to book your place](#)

DATES FOR YOUR DIARY

TERM 1 - OCTOBER 2024

Year 11 Mock Exams - Monday 21st Oct - All week

Half Term - Monday 28th Oct—Friday 1st Nov

TERM 2 - NOVEMBER 2024

Inset Day - Monday 4th Nov (Year 11 Mock Exams)

Inset Day - Tuesday 5th Nov (Year 11 Mock Exams)

Start of Term 2 - Wednesday 6th Nov

SAVE THE DATES - KS3 (Years 7, 8 & 9) Parent Evenings

Thursday 7th November - Wednesday 13th November - Wednesday 27th November

Parents/carers will shortly receive a letter with further information

INSET DAYS

Monday 4th November 2024 (Year 11 Mock Exams)

Tuesday 5th November 2024 (Year 11 Mock Exams)

Monday 6th January 2025

(Possible Year 11 French/Spanish Speaking Mock Exams)

Friday 14th February 2025

(Possible Year 11 Mock Exams)

EARLY SCHOOL CLOSURES

Friday 20th December 2024

Friday 4th April 2025

Tuesday 22nd July 2025

(staggered by year group from 12.20pm-12.40pm)

Reminder of Parent Forum dates for this year

Wednesday 4th December 2024 6pm

Wednesday 5th February 2025 6pm

Wednesday 19th March 2025 6pm

Wednesday 30th April 2025 6pm

South Cliff Dental Group, Trinity Trees Eastbourne are pleased to advise you that they are now able to accept a limited number of new patients (under 18 years of age) to our practice.

If it has come to your attention that any of your students are struggling to see an NHS dentist, please feel free to pass on our details.

Yours sincerely

Aprajita Rajlaxmi

SOUTH CLIFF
DENTAL GROUP

Please be reminded that teaching staff contact details can be found on our website

<https://willingdonschool.org.uk/our-school/our-staff-team>

Safety Tips

Parking Outside School

- Allow yourself plenty of time as the area is likely to be busy.
 - Do not park on yellow zigzag lines and avoid parking opposite them.
- If you decide to park further away, please be considerate of local residents and avoid blocking driveways or access ways.

As with the majority of schools in the country, we do not have a 'parent' car park. If you do need to drive to drop off or collect your child please park considerately and ensure you are not obstructing drives, garages or access to roads. Please be respectful of our neighbours and remember that parking on zig-zag lines at any time of the day is prohibited. Our children's safety is our main priority and this includes their journey to and from school. We appreciate your support in this matter.



The Friends are always delighted to donate resources to the school and today they unveiled the new plaque in the Library. The Friends had donated over £2000 in books and laptops for the new library. This is also the changing of the guard as Rosie Beddows (on the left) retires as Chair and Lisa Morrison steps up. If you are interested in being involved with the Friends, please contact us Friends@willingdonschool.org.uk

LEARN TO FENCE

Attacks, feints, parries, remises and prises de fer! Learn all the tactics in a five week course under the guidance of Coach Will Miller (Level 3 epee, three times World Veteran Championships fencer, bronze at the 2023 Leon Paul Summer Open, bronze at the 2024 Highland Open). After week five you will be ready to fence *épee* in the Eastbourne Fencing Club and challenge anyone there.



Image copyright Wednesday, Netflix. Eastbourne Fencing Club is held in a regular school gym!

- When:** Mondays from 6.30pm starting 4th Nov
Where: St Catherine's College Gym, Priory Road, BN23 7BL
Cost: £60
Ages: 8-16 (next adult course runs from January 2025)
Info: All fencing gear is provided. Wear clothes to run around in and bring a water bottle. To register, please email eastbournefencing@gmail.com with child's name, age, height, waist size, whether left or right-handed along with any other relevant information. Class sizes will be limited to 10.



Aspiring female fencers – don't wait!

Sport England has provided a grant to give the first two girls to register a free place on this beginners' course!

Willingdon Community School and Stone Cross Primary School presents

Illuminate Firework Extravaganza

Friday 8th November 2024

Huge Firework
Display

By Frontier Fireworks

Gates open 6 - 8pm

At Willingdon Community School, Broad Road

Eastbourne Bonfire Society & Torch Lit Procession

Long Man Brewery, Catering Vans & Refreshments, Entertainment, Music,
Stalls, Fairground & Lots of Family Fun!

Tickets £5 each (Pre-schoolers free)

Tickets available from Stone Cross Primary School, Willingdon Community School,
British Queen Public House, Willingdon & Crafted Coffee Lounge, Stone Cross

Limited tickets available, tickets are non-refundable.

PURCHASE NOW TO AVOID DISAPPOINTMENT!



Willingdon
COMMUNITY SCHOOL



Contact: friends@willingdonschool.org.uk or Foscs@yahoo.com Tel: 01323 485254

Tickets can be purchased through ParentPay and collected from Student Support. We currently have tickets ready for those booked on or before 15 October.



Head of Year

Mrs Muller / Mrs Naylor

Email - pastoral-7@willingdonschool.org.uk

Year 7

Year 7 Homework:

We are aware that the homework expectations in secondary school are tricky for students to adjust to, and the amount they receive is significantly more than when in primary school. We also appreciate there are quite a few different logins, and platforms that subjects use. If any student is still experiencing any difficulties getting onto any of these platforms please contact the subject teacher (their emails are all on the school website and in your Arbor in the reports section). We also have a homework schedule which should help students to know what is being set and when. This can be found on the school website and through the link below;

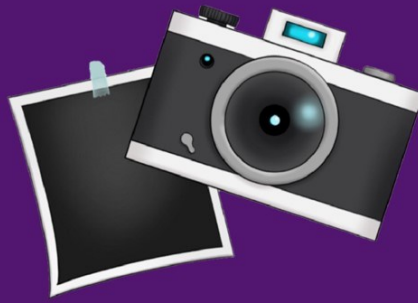
<https://willingdonschool.org.uk/assets/Homework-schedule-24-25.pdf>

In addition, can we remind you again of the Year 7 lunchtime clubs that take place in MA3 on Tuesday and Thursday lunchtimes, plus maths support in IT2 every lunchtime (except Fridays) all of these have staff present to support with any difficulties. If after attendance to these clubs your child is still struggling with homework, then please contact their tutor to discuss.

Finally, please can we remind your young person to also complete the student voice below. Click on the below link to answer the questions.

[Year 7 Student Voice](#)

The Year 7 Team



Year 7 Digital School Photos

The Friends of Willingdon Community School are offering parents the opportunity to purchase digital photos of their Year 7 child (which were taken in-house for Arbor purposes), at a low cost, with all donations going to the Friends.

Mindful of the economic climate we are all now experiencing, Willingdon made the decision to take the photos in-house. This means that the digital images are still of high quality, but allows us to offer the digital photo to parents/carers in return for a small donation of £3.00.

You will be able to view the photo that has been taken when you log in to Arbor. We think that they are fabulous and hope you do too.

ParentPay will be open until Friday 18th October 2024 to purchase your digital image when this window will close and any images purchased will be delivered to parents, via email, from Tuesday, 22nd October onwards.

LAST CHANCE - The Year 7 photos will close on Monday, 21st October and digital photos will be emailed from that date.



Head of Year
Mr Keast

Email - pastoral-8@willingdonschool.org.uk

Year 8

With half term on the horizon, Year 8 have had another successful week with lots of positive praise and reward points being earned. This week in tutor time, Year 8 have been learning all about black history and the importance of celebrating black history month. This has linked well with what Year 8 are currently learning about in history - the slave trade. Students are currently working on their group presentations where they have demonstrated both 'compassion' and 'respect' whilst studying such a sensitive topic! In other news, we would like to say a massive well done to Isabella B who recently took part in the bi-annual swimming trials with her swimming club at Eastbourne College. Isabella achieved four personal best times for 50m Butterfly, 50 m Breaststroke, 50m Backstroke and 100m Individual Medley picking up a bronze medal in the process!

Finally, well done to Hayden H and Isla P for both achieving the most amount of rewards points (24) this week in Year 8 - an excellent achievement!

Mr Keast
Head of Year 8



Head of Year

Mr Cain

Email - pastoral-9@willingdonschool.org.uk

Year 9

Another extremely busy and full on week for Year 9 students, with so many positives to share. We started the week off welcoming Jack the Lad into school to deliver his second session to the whole year group from his Dare to Dream programme. The feedback from Jack and his team was incredibly positive, full of praise for the engagement of all the students. Students have also had the opportunity to take part in a fieldwork study during Geography lessons too. Generally, they have engaged really well in this too, monitoring the traffic in the local community. We have also had representation of the school in many ways again this week, boys and girls football, as well as the Eastbourne Schools Cross Country Championships. A huge well done to all that have been involved in representing the school so well.

Finally, I want to share a massive thank you and well done to Honor, Sophia, Sophie, Esme, Daisy and Olivia from 9PHI. They have delivered three assemblies this week to Years 7-9 and the commitment they have shown to this is remarkable. Having the courage to stand in front of their peers and younger students to share important messages that can impact all students has been wonderful to witness. Well done girls!

Mr Cain

Head of Year 9



Willingdon
COMMUNITY SCHOOL

Dear Parents and Carers,

Visit to Fishbourne Roman Palace near Chichester

We are pleased to offer Year 9 students the opportunity to visit Fishbourne Roman Palace near Chichester, and take part in a museum workshop about Roman life to support their study of Latin.

The trip will take place on Friday 29th November.

We will be travelling by coach leaving the school at 8.30am. Students will get the opportunity to explore the museum and grounds and then take part in one of two workshops. We hope to return to school by 3.30pm.

Students will need to bring a packed lunch; a covered eating area is provided by the museum.

The total cost of the trip is £31 to cover the cost of transport, entrance to the museum and workshop and insurance.

Payment for the trip can be made via ParentPay from Monday, 21st October, from approximately 3pm.

Many thanks,

Mr G Ellwood



Head of Year
Mr Roche

Email - pastoral-10@willingdonschool.org.uk

Year 10

Dear Year 10 Parents,

I'd like to congratulate our Year 10 students on another fantastic week. We've had several great sporting events, and the students have conducted themselves brilliantly, especially during the recent Open Mornings where they helped by taking parents around the school.

Once again, our attendance this week has been strong at 95%, which is excellent. As we head into the final week of term, I am confident we will finish on a positive note.

One last reminder: please ensure that your child has secured a place for work experience in May. If there are any new placements to report, kindly contact Mrs. Rooney.

Kind regards,

Mr Roche

Head of Year 10



Head of Year
Mr Gordon

Email - pastoral-11@willingdonschool.org.uk

Year 11



After what has felt like a very busy term, the first set of mock exams are upon us. I hope that the Year 11 parents evening was positive and you feel confident in being able to support with study and revision at home. We appreciate this can be a stressful time for many of our students so as a year team we are working hard to support all of our students, this support also extends to you as parents and carers. Should you have any more queries following parents evening, please do contact us on pastoral11@willingdonschool.org.uk

The college application process has reached the next level and tutors have been working with students to make sure profiles are fully up to date. Again, if parents and carers have any queries, please do not hesitate to contact us on the above email or our careers team on careers@willingdonschool.org.uk.

As always, have a lovely weekend.

Mr Scowen

Acting Head of Year 11



Heathfield

Community College and Sixth Form

Pride . Ambition . Community

14 October 2024

Dear Parent/Carer and Student

As you and your child start to consider options post 16, we would like to let you know about our Sixth Form Open Evening which will take place on Thursday 24 October 2024 from 5.30pm - 7.30pm. Speeches from the Headteacher, Caroline Barlow, and the Director of Key Stage Five, Paul Evason will take place at 5.45pm and 6.30pm.

The evening will provide you with the opportunity to discuss course choices with teachers, have conversations with existing students about life in the Sixth Form and their experiences as well as gaining an understanding of what we can offer you at our ambitious and successful Sixth Form.

Heathfield Sixth Form has an established reputation for supporting ambition in an inclusive environment. In our Sixth Form we have approximately 300 students and every year our intake includes students from other local secondary schools representing around a third of our students.

Our Sixth Form students have access to a designated study space and Common Room, along with shared facilities such as our library, computer suites and well-resourced classrooms. Students also receive individual coaching, focused careers advice and progression guidance.

Heathfield Sixth Form is a high performing College placed consistently in the top 20% of Sixth Forms nationally. Last year 58% of students achieved the gold standard of A* - B grades with 32% achieving A* - A grades, or equivalent.

The current prospectus and course guides will be available on the evening but can also be found on the College [website](#). This also includes information about transport, including our dedicated Sixth Form services. At Open Evening please arrive through the Main Reception to sign in. We look forward to seeing you on Thursday 24 October.

Yours faithfully

PAUL EVASON
Director of Key Stage 5

SAM WHITE
Head of Years 12 and Year 13



Tel: (01435) 866066 e-mail: office@heathfieldcc.co.uk

Cade Street, Heathfield, East Sussex, TN21 8RJ Website: www.heathfieldcc.co.uk

Headteacher: Ms Caroline Barlow B.A. (Hons)

<https://www.heathfieldcc.co.uk/>



OPEN EVENING

Thursday 24 October
5:30pm – 7:30pm

High quality teaching & learning
Strong pastoral care and support
Tailored progression guidance

Contact the College to book Open Morning Tours or for any questions

6application@heathfieldcc.co.uk | 01435866066 | www.heathfieldcc.co.uk

Sep / Oct 24	Careers Visits at local Schools
1 Oct 24	Applications open through Careers East Sussex
24 Oct 24	Sixth Form Open Evening
22 Nov 24	Priority Application Deadline
<i>We will confirm our 2025 course offer and timetable based on applications received by this deadline.</i>	
Jan / Feb 25	Course Confirmation and Interviews
Mar 25	Formal Offer Letters Issued
7 July 25	Sixth Form Transition Day
Aug 25	Results & Enrolment

APPLICATIONS

All applications for Heathfield Sixth Form are made through Careers East Sussex.

**CAREERS
EAST SUSSEX**

-  Heathfield Community College Page
-  Heathfield Community College Courses

CONTACTS

For questions regarding the College or the application process contact:

6application@heathfieldcc.co.uk
01435 866066

KEEP UP-TO-DATE

Want to stay up-to-date with Open Mornings and Application Information?

-  Sign Up on our Google Form

Contact the College to book Open Morning Tours or for any questions

6application@heathfieldcc.co.uk | 01435866066 | www.heathfieldcc.co.uk

[Heathfield Community College](#)

[Heathfield Community College Courses](#)

[Sign Up on our Google Form](#)