



# PARENT BULLETIN

Follow us on social media



22nd March 2024



Exciting news! We've just kicked off our latest fundraising initiatives aimed at enriching our school. But this isn't just about expanding our resources; it's about fostering a thriving community where our students' well-being, community spirit, and future generations are at the heart of everything we do.

Our vision is bold and long-term. We envision a school where every student feels supported, empowered, and equipped with the skills they need to excel in today's world. By investing our time, energy, and resources into these initiatives, we're laying the groundwork for a brighter tomorrow - one where our community thrives.

We have launched three just giving pages as part of this drive, and we are looking for donations for our library, a multi-use games area (MUGA) and an on-site forest school.

[JustGiving.com - Forest School](#)

[JustGiving.com - Library](#)

[JustGiving.com - MUGA](#)

These three focuses will create a triangle of change, where we can ambitiously promote literacy, sporting excellence and holistic education.

But we can't achieve this vision without your help. We are confident that any investment into these provisions will have an exponential impact on our community at large. We want to be an inspiration to other communities around Sussex, promoting the transformative potential of education. We recognise that everyone's circumstances vary, and not everyone may be in a position to contribute financially. However your support comes in many forms, and every gesture counts. If you're unable to make a monetary donation at this time, there are still meaningful ways you can help. Simply sharing our page with your friends, family, and colleagues can amplify our message. Additionally, if you know of any crowdfunding initiatives or alternative funding sources that align with our mission, we would greatly appreciate your suggestions.

Your support, whether through donations or spreading the word, enables us to continue our vital work within the community. Together, we can make a lasting impact on our schools, our community, and most importantly, our future generations.

Thank you for your continued support,

Tatyana Goodwin

Learning Mentor



Dear Parents and Carers

We have been fortunate to welcome four American Teachers to Willingdon Community School who have been working with us now for several weeks. As they near the end of their placement, they are supporting our student leaders in putting on a School Spirit Event. These types of events are hugely popular in America, helping to build team spirit, pride in school Houses and contributing to and competing in their school community. Developing our school ethos and values is really important to our students so we want to increase the opportunities for them to take part in these types of events.

Our School Spirit Day will be held on Thursday 28<sup>th</sup> March which is the last day of term and an early closure. Please see reminder of timings for the day below. ALL students in the school are invited to wear non-uniform for the day. It is our hope that the whole student body will embrace the essence of the day by choosing to wear colours that match their Houses. Even a splash of colour would be a wonderful gesture. Donations of £1 for the non-uniform day should be made by Wednesday 26<sup>th</sup> March via ParentPay. If parents/carers prefer, they could donate to the school crowd funding aimed at purchasing a new Multi-Use Games Area for the community. Please follow the link. <https://www.justgiving.com/crowdfunding/Willingdoncommunityschool>

Year 7s will be enjoying a whole session of 'pep-rally' style games and competitions after break until the end of the school day. We hope this might launch a new Spring tradition for our students to enjoy and thank our American guests for all their effort and time in putting this together.

Kind regards

Mrs Lucy Collins

## REMINDER

Early Closure and end of term arrangements – Thursday 28<sup>th</sup> March.

Term 4 will end at lunch time and students will therefore be free to go home from 12.30pm. Students will be in normal lessons up until this time. The end of the day will however be staggered to prevent traffic congestion on Broad Road. Please see the timings below. Please would everyone respect our neighbours and not block access to their homes and driveways.

The school buses cannot be rescheduled to run early and therefore students will need to make their own transport arrangements.

Year 7 – 12:30pm

Year 8 – 12:35pm

Year 9 – 12:40pm

Year 10 – 12:45pm

Year 11 – 12:50pm

Students who receive free school meals should use the canteen at first break-time.

# How to support Year 11 in the countdown to exams

## #year11parents #GCSEsupport #parentsworkingtogether

So, the final set of mocks have now come and gone. For parents, carers and students alike, there isn't long until the real exams! A few weeks of focus now could really pay off when they open that envelope of results in August!

With this in mind, members of our governing board have been sharing their experiences of parenting students through exams and have put together some tips. If you have any tips to share back, it would be great to hear them.

### How to support Year 11 in the countdown to exams – 1

Encourage regular and frequent revision. When it comes to learning, regular habits work best. Support your child not to leave it to the last minute, but to return to each subject a few times a week.

#year11parents

### How to support Year 11 in the countdown to exams – 2

Help your child see the big picture. Of course, our 15 and 16 year olds tend to live in the moment – that's one of the things we love about them! 🍷 But help them prioritise revision in these few weeks. After the exams, they will have weeks and weeks to do what they want! One of our governors said,

**WILLINGDON  
COMMUNITY SCHOOL  
BOXERCISE** 

**WHAT IS INVOLVED IN THE CLUB**

- PADWORK
- SHADOW BOXING
- SKIPPING
- CIRCUIT TRAINING
- BOXING RELATED GAMES

**SPORTS HALL  
YEAR 9 & 10**



**FOLLOW US**



THE CLUB IS A NON-CONTACT SPORT WHICH WILL FOCUS ON DEVELOPING SKILLS AND CHALLENGING YOUR FITNESS

**WEDNESDAY  
3-4 PM  
MR RODDEN**

# SOCIAL MEDIA



In RSHE studies, a major unit of work is on Relationships, and we were delighted that East Sussex Police offered to come in and share some important messaging with our Year 11s.

The talk was delivered by experienced police officers supported by two Police Constables and two cadet officers. We are so proud that three of these officers are ex-Willingdon students! The cadets had put together a fantastic presentation as part of the preventative work combatting Violence Against Women and Girls.

Free kits were offered, including leaflets, signposting for support, an anti-spiking device, a single use drink cover and an attack alarm.

Thank you so much to East Sussex Police for arranging all this and for all the hard work that goes into keeping young people safe in the community.



Y10 receiving their Intermediate Maths Challenge certificates!

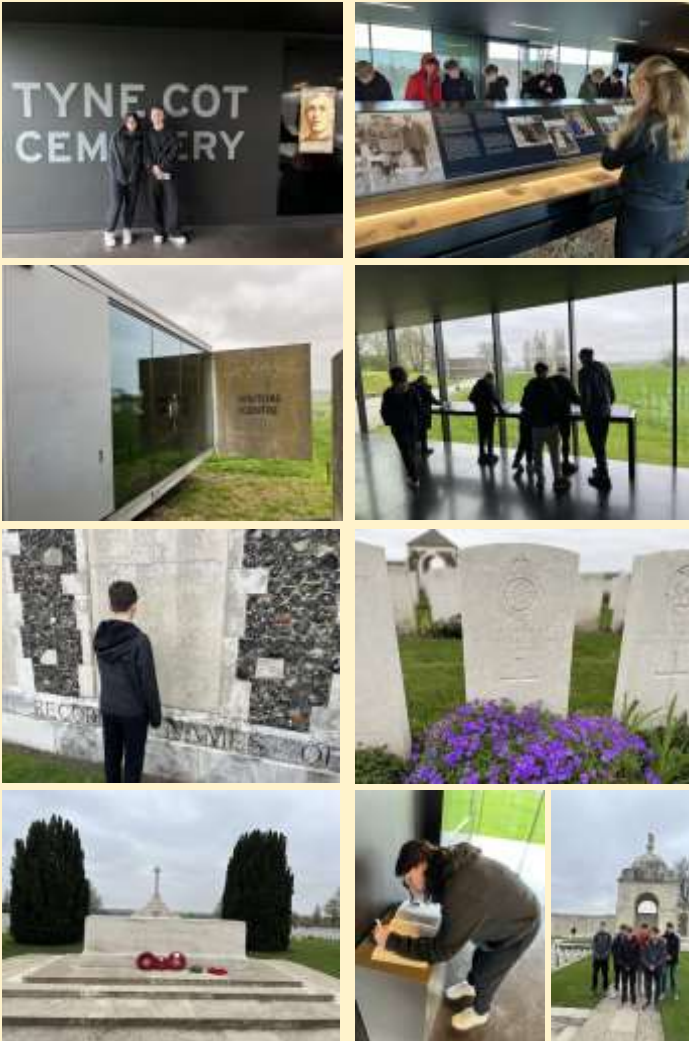


Super proud of ex-student Fletcher Holman making the first team squad for this afternoon's FA Cup tie. Good luck to Fletcher!

# Trip to Belgium



On the ferry to Belgium.



**Tyne Cot cemetery** the biggest commonwealth war cemetery in the world.

So proud of our amazing students who have shown such respect at Tyne Cot. They were really interested in this incredible place and took time to reflect and find ancestors or family names.

Extra stop to where John McCrae worked as a media and wrote Flanders Field. The graves together represent soldiers who died together and remains could not be separated. We also found a grave of a fifteen year old.



**Langemark Cemetery** great for our students to see the contrast between cemeteries and pay their respects to all.

# YEARS 9 & 10



Open to Y9 and Y10 students

Wednesday 8th May 2024

2x 25 minute online quizzes

Contact Miss Connolly if you are interested in taking part!

Deadline for entries: 19th April



Competition dates:  
1st - 17th May 2024

## Biology Challenge

Join over 43,000 students worldwide in this year's online quiz and stimulate your curiosity for the natural world.

- Open to all students in:
  - Y9/Y10 in England and Wales
  - Y10/Y11 in Northern Ireland
  - S2/S3 in Scotland, and
  - Equivalent year groups worldwide
- Students are rewarded with e-certificates



### Year 10 work experience / 13<sup>th</sup> – 17<sup>th</sup> May 2024

Further to previous communication regarding Year 10 work experience, which will take place from 13<sup>th</sup> – 17<sup>th</sup> May 2024, I am writing to confirm that students will receive confirmation of their work experience placement next week. Students will be given an envelope, which will contain the following:

- Parent/Carer/Student agreement form (this includes the employer contact details; please make a note of these details before returning the signed form)
- Parent/Carer Safeguarding agreement form
- Medical/Contact form
- Suggestions of what to include in an email or telephone call to the employer

Please can that students either email or call their employer, by **Friday 19<sup>th</sup> April**, to introduce themselves, confirm that they will be on a placement with them for the week of 13<sup>th</sup> - 17<sup>th</sup> May 2024 and ask what the hours of work and dress code are. For those students that have a school/nursery placement, please note that they may be closed from Friday 29<sup>th</sup> March - Friday 12<sup>th</sup> April.

In addition, please could the forms be signed and returned to my attention by **Friday 19<sup>th</sup> April**. Should you wish to scan/email them please send to [srooney@willingdonschool.org.uk](mailto:srooney@willingdonschool.org.uk).

If any students require support in contacting their work placement, or if you have questions about any of the above, please do not hesitate to contact me.

Kindest regards,

Sarah Rooney  
Careers Adviser & WEX Co-ordinator

[Tel: 01323 485254 ext 281](tel:01323485254)

# YEARS 9 & 10

**REMINDER—We still have a few spaces available**

## **YEAR 9 – IMPERIAL WAR MUSEUM AND HOLOCAUST EDUCATION SESSION.**

**Friday 19<sup>th</sup> April 07.20am – 5.30pm**

Dear Parent/Carer

We are arranging a trip for Year 9 students to visit the Imperial War Museum in London. As part of the trip students will have time to explore the displays which include exhibitions on World War One, World War Two and Peace and Security 1945 to 2014. This is a fantastic opportunity to support and enhance your child's knowledge of 20<sup>th</sup> century History and for them to engage with historical artefacts from photographs and letters to a Spitfire and a T34 tank. During the day the students will also engage with museum staff who will run an education session focussed on the Holocaust, students will then have an opportunity to visit the Holocaust gallery.

The coaches will be leaving from school promptly at 7.30am, so students will need to arrive and register with staff in the canteen at **07.20am**. [Please consider how your child will get to school, as the coaches have to leave Willingdon before the school buses arrive.](#)

We anticipate arriving back at school at approximately 5.30pm. Students are expected to wear their school PE kit so that they are easily identifiable and so that they have comfortable walking shoes for the museum. A packed lunch will be required. If your child is entitled to free school meals, please indicate this when you make your payment on ParentPay and this can be collected before we depart.

If your child suffers with travel sickness that requires medication not currently held in school, they will need to take the medicine before they travel in the morning and you will need to provide the medication in a named box, to be administered by a member of staff, before we travel back. If medication is required, please indicate this when you make your payment on ParentPay. Students with asthma should carry their inhalers with them.

We have 44 places on the trip. The cost for the whole trip is £50.50, which covers all travel and venue costs. To confirm your child's place on the trip, would you kindly pay via ParentPay by Friday 15<sup>th</sup> March. The payment will secure your child's place on the coach and the trip will operate on a first come first served basis.

If you have any questions or queries please contact Ms Hardwick [jhardwick@willingdonschool.org.uk](mailto:jhardwick@willingdonschool.org.uk) or Mrs Hughes [lhughes236@hotmail.co.uk](mailto:lhughes236@hotmail.co.uk)

Poor behaviour/low attendance will not be tolerated at Willingdon Community School. Therefore, we reserve the right to cancel a student's participation in a trip if behaviour /attendance does not reach our expected high standards.

Please ensure all medical information held on EduLink is up to date before the trip date.

Kind regards,

The History department  
Willingdon Community School.

# CAREERS

## **Work Experience Courses For Medicine (ages 14 and above)**

We have some online courses coming up created by doctors for students interested in careers in medicine.

Some courses are paid and some completely free, all include a certificate for use in med school applications and are ideal preparation for students applying for university degrees in medicine and those younger students too who may be considering the profession.

- 1) Emergency Medicine Live on Sunday 24th March. You can expect to learn about the treatment and management of major trauma and medical emergencies. With insights into pre-hospital and emergency medicine. [Students can see more information here.](#)
  
- 2) Medicine Career Day Live Saturday 30th March. An ideal day for students wanting to know all about the medical profession, learn about the personal statement for medicine, UCAT examinations and gain some work experience in the afternoon by helping to treat and diagnose patients. [Students can see more information here.](#)
  
- 3) Medical Ethics Live, on Sunday the 7th April 2024. It's vital to understand medical ethics when applying to med school and how to understand moral dilemmas and ethical questions doctors face everyday. It's highly likely that you'll be asked ethics questions or face an MMI station designed to test your understanding of medical ethics so it's really important you understand some of the questions you will face at medical school interviews. [Students just need to register here.](#)
  
- 4) Surgery Work experience Live taking place on Sunday 21st April 2024. This interactive day is designed to give students a meaningful insight into careers in medicine and surgery. Students join a patient on their journey from initial presentation to diagnosis and treatment. The doctors will guide you through how they would conduct a surgical consultation, interpret signs and manage patients. [All the details available here.](#)
  
- 5) Suture Like A Surgeon online Course. Sunday 12th May 2024. Join our suturing masterclass where you will learn how surgeons effectively manage and assess acute wounds with suture closure. You will be sent our suture kit in the mail before the course starts so you can suture along with the doctors, learning first hand the various techniques needed to be a surgeon. [You can view all the course info here.](#)

All courses have been created by doctors and provide outstanding work experience for you to use in your applications to medicine. If you can, we'd love to see you there.

Best Regards,

Jasmine Little