

HEALTH & SAFETY POLICY



Willingdon
COMMUNITY SCHOOL

Date last approved by the Governing Body: 01/12/2022

To be reviewed: December 2023

Staff Responsible: Andy Webb, School Business Manager

Link Governor: Colin Etwell

Contents

1. General Policy Statement	4
2. School organisation to meet the requirements itemised under the General Policy Statement.	5
3. Safety Responsibilities of Groups and Individual Members of Staff are as follows:	6
3.1 The Governing Body	6
3.2 Headteacher	6
3.3 Health & Safety Co-ordinator	8
3.4 The Educational Visits Co-ordinator will:	8
3.5 Heads of Department	9
3.6 Teachers (including Cover Manager/Supervisors).....	9
3.7 Technician/Learning Support Professional	10
3.8 First Aid Co-ordinators	10
3.9 Teacher in charge of the Library.....	11
3.10 Careers and Work Experience	11
3.11 Managers/Staff with supervisory responsibilities within Support Staff teams	11
3.12 The Site Manager will ensure that:	12
3.13 The Site Team will:.....	12
3.14 Trade Union Safety Representative	13
3.15 Staff Liaising with Contractors	13
3.16 Members of Staff Generally.....	13
3.17 Students	14
4. Provision of competent health and safety advice.....	14
5. Health and Safety Committee	15
5.2 Specific Functions:	15
6. Crisis Management	16
6.1 Crisis Management Team:	16
6.2 Function of the Crisis Management Team:	16
7 General Emergency Procedures	16
8. Fire Procedures (also see Fire Safety Policy)	17
9. Bomb Incident Management.....	18
10. First Aid Procedure (also see the First Aid Policy).....	18
11. Incident/Accident Recording and Reporting (also see the Incident Reporting and Investigating Policy)	19
12. Health Issues.....	19
12.1 Smoking (also see the No Smoking at Work Policy).....	19
12.2 Alcohol and Drug Abuse (also see the Drugs and Alcohol at Work Policy)	20
12.3 Staff Wellbeing (also see the Stress Management Policy).....	20
12.4 Protecting pregnant workers and new mothers (also see the Pregnancy, Childbirth and Breastfeeding: Risk Management Policy).....	21
12.5 Communicable Diseases (also see the Communicable Diseases Policy)	21
13. Risk Assessments and Guidance Notes/School Codes of Practice (also see Risk Assessment Policy)	22
13.1 Departmental Health and Safety Policies	22
14. Specific Hazards.....	23
14.1 Asbestos (also see the Asbestos Management in the Workplace Policy)	23
14.2 Legionella (also see the Legionella Policy).....	23

14.3	Contractors (see also the Contractor Management Policy).....	23
14.4	Gas and heating systems.....	24
14.5	Security (see also guidance for schools on security)	24
<p>Arrangements are in place for the school site to be as secure as possible and in line with East Sussex County Council guidance. A risk assessment has been undertaken to ensure that adequate controls are in place and it is essential that staff follow these procedures.</p>		24
14.6	Display screen equipment (also see the Display Screen Equipment Policy).....	24
14.7	Electrical Equipment (also see the Electricity at Work Policy)	24
14.8	Machinery and Equipment (see also Work Equipment Policy).....	25
14.9	Moving and Handling (also see the Manual Handling Operations Policy)	25
14.11	Vehicle Safety in Schools.....	26
14.12	Managing Slips, Trips and Falls (also see the Workplace Health, Safety and Welfare Policy)	26
14.13	Waste Disposal	27
<p>All waste will be disposed of according to appropriate health and safety guidelines. Arrangements are in place to collect, store and dispose of waste via licensed contractors with the appropriate paperwork completed. Special arrangements have been made for the storage and disposal of hazardous waste with records kept. Where necessary, special arrangements have also been made for the storage and disposal of clinical waste.</p>		27
14.14	Violence at Work (also see the Violence and Aggression at Work Policy)	27
14.16	Off-site Visits.....	27
14.17	Work Experience Placements (also see the Work Experience Policy)	27
14.18	Hazardous Substances (also see the Control of Substances Hazardous to Health (COSHH) Policy).....	28
14.19	Radiation	28
14.20	Pressure Systems.....	28
14.21	Noise at Work	28
14.22	Hiring of school premises	29
15.	Use of Minibuses and Other Vehicles.....	29
16.	Supporting Pupils with Medical Conditions (also see the guidance on supporting pupils with medical conditions)	29
17.	Personal Protective Equipment (PPE) (also see the Personal Protective Equipment Policy)	30
18.	Training and Information (also see the Health and Safety Training Policy).....	30
19.	Monitoring Health and Safety.....	31
19.1	Inspections	31
19.2	Auditing.....	31
20.	Visitors.....	31
21.	Trade Union Safety Representatives	31
22.	Health and Safety Policy Monitoring and Review	32
<p>This policy is supplemented by the following local documentation (available in school, on request):</p>		32
List of Useful Contacts in School		33

1. General Policy Statement

The Headteacher and Governors of Willingdon Community School believe that the health and safety of persons within the school is of paramount importance. It is our intention to prevent accidents and occupational ill health and where possible eliminate hazards in the workplace.

It is the intent of the Headteacher, Mrs May, and Governors of the school to ensure that a safe and healthy workplace is provided and maintained for all our employees. This will include the provision of safe systems of work, safe plant and equipment and a safe access and egress to the premises. We will ensure that adequate information, instruction, training and supervision is provided to ensure that staff can carry out their work safely.

The Headteacher and Governors will ensure that others who are affected by our activities are not subjected to risks to their health and safety. This will include students, visitors, parents/carers, volunteers and contractors.

These responsibilities will be achieved by the establishment of an effective health and safety management system within the school that will be underpinned by risk assessments. This will involve the implementation of arrangements for the effective planning, organisation, control, monitoring and review of preventative and protective measures and our overall health and safety performance including any emergency arrangements. In addition the Headteacher and Governors will undertake to ensure compliance with policy and guidance produced by East Sussex County Council. The Headteacher and Governors will ensure that adequate resources are identified for health and safety.

To support us in complying with our legal responsibilities, we have appointed a competent person to advise on health and safety matters.

We believe that health and safety standards will be maintained only with the co-operation of all staff, students and visitors to the school. We expect all staff to co-operate fully with this policy and to actively contribute to any consultations in relation to health and safety policy and procedures. In addition we will ensure that all pupils, visitors and contractors are provided with the information they require to enable them to comply with this policy.

It is the intention of the Headteacher and Governors that procedures to ensure relevant health and safety issues are embedded within the curriculum at all levels where appropriate.

The effectiveness of the policy will be regularly monitored to ensure that health and safety arrangements are being implemented and that the people named in the policy are carrying out their duties.

The policy will be reviewed annually, following a significant event or a change to policy or procedures, and revised where necessary.

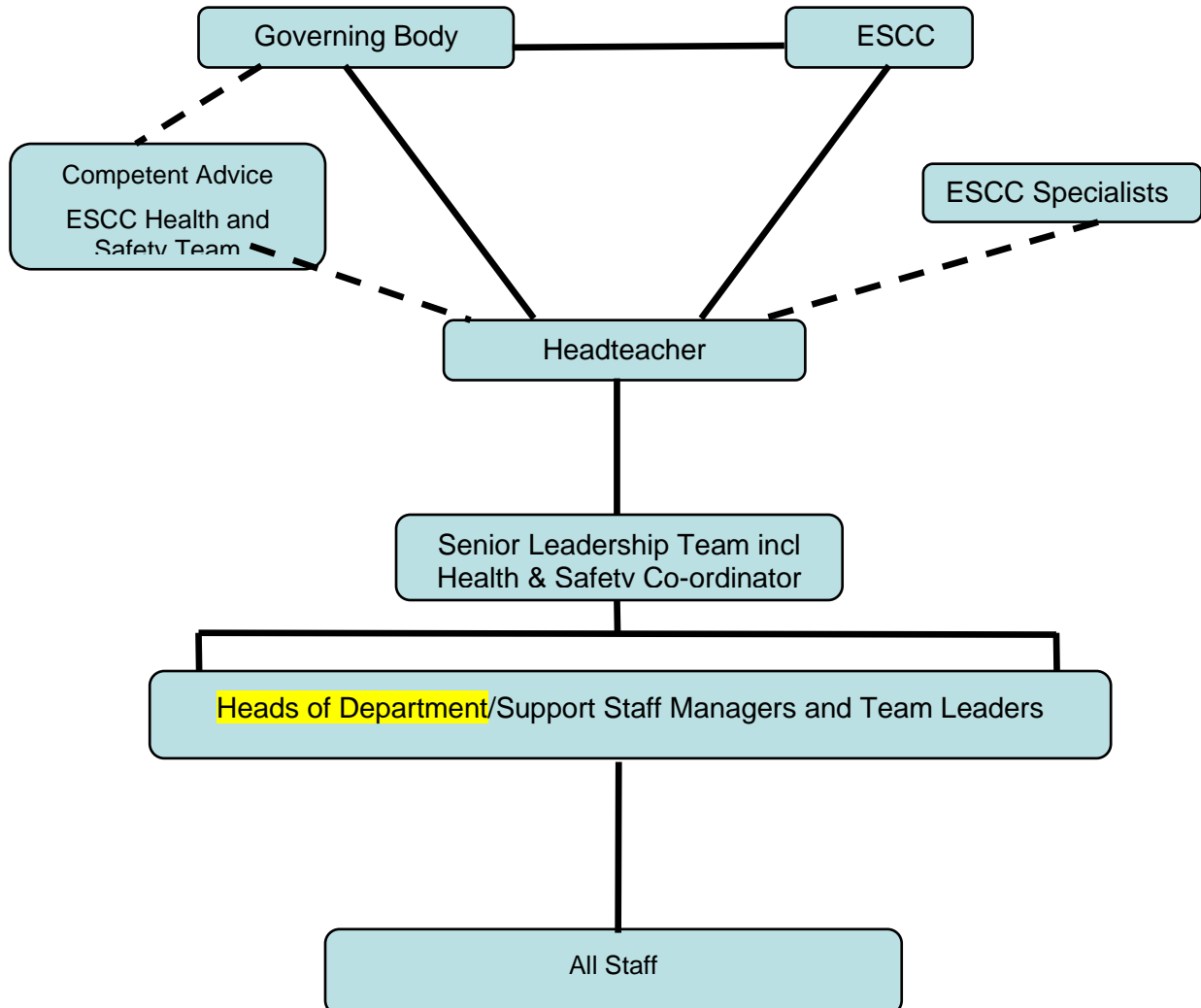
Signed: Headteacher Date

This policy was endorsed by the Governing Body at their meeting on 2/12/22

Signed: Chair of Governors Date

2. School organisation to meet the requirements itemised under the General Policy Statement.

Ultimately the responsibility for all School organisation and activity rests by definition, with the Headteacher. However all staff have a responsibility towards safety with the specific lines of delegation being set out as shown below.



3. Safety Responsibilities of Groups and Individual Members of Staff are as follows:

3.1 The Governing Body

The Governing Body in its role as controller of premises will ensure, so far as is reasonably practicable, the health and safety at work of employees and others (e.g. contractors, students, visitors) in accordance with Section 2 and 4 of the Health & Safety at Work Act 1974.

In order to discharge this responsibility, the Governing Body will:

- a. ensure that a 'competent person' is appointed to provide advice on health and safety legislation and best practice;
- b. ensure, by attending regular health and safety training and receiving copies of all health and safety circulars, that East Sussex County Council's Health and Safety Policies are complemented by the school's Health and Safety Policy, that these procedures are kept up-to-date and that positive arrangements are in place to ensure that all staff and pupils are aware of and comply with its contents;
- c. ensure that the policy contains rigorous and comprehensive systems for active monitoring (auditing health and safety management systems, inspections, risk assessments) and reactive monitoring (accident/incident investigation) and rectifying identified faults within the school as outlined within East Sussex County Council policy and guidance;
- d. ensure, via reviewing risk assessments and inspection reports, that there is adequate provision both in staffing, training, facilities and resources to allow the school to meet both its legal and moral obligations with respect to health, safety and welfare;
- e. nominate a Health and Safety Governor/subcommittee
- f. receive updates on the school development plan for health and safety at each meeting from the Health and Safety Co-ordinator/Health and Safety Governor/subcommittee in order to enable the Governing Body to monitor the adequacy of arrangements and take any action necessary;
- g. to consider information, statistics and reports relating to health, safety and welfare matters;
- h. to consider and make recommendations regarding individual health and safety issues which have not been resolved at management level.

3.2 Headteacher

The Headteacher has overall responsibility for safety policy, organisation and arrangements throughout the School and will:

- a. appoint a 'competent person' to provide advice on health and safety legislation and best practice;
- b. provide liaison with the Inspectors: Local Authority, Department for Education and the Health and Safety Executive (HSE) with regard to safety aspects;
- c. budget for safety and health matters;
- d. review the Health and Safety Policy annually and when significant changes occur within the organisation of the school;

- e. develop, introduce, maintain and review safety management procedures to ensure the school complies with legislative requirements and good industry practice e.g. risk assessments including fire, display screen equipment and manual handling;
- f. nominate specific staff with designated safety roles, e.g. Health and Safety Co-ordinator, Premises Co-ordinator, throughout the school;
- g. chair the Health and Safety Committee, or nominate a member of senior leadership team to undertake this activity;
- h. ensure that routine maintenance checks and inspections required by legislation of fixed service equipment, i.e. boilers, pressure vessels etc. are undertaken;
- i. ensure the provision and maintenance of all 'fire' equipment, including the preparation and review of Fire Risk Assessments;
- j. ensure health and safety issues associated with major building projects are complied with;
- k. ensure that incidents, near misses and dangerous occurrences are reported via the County Council's on-line incident reporting system, minor injuries form or hazard reporting system, as appropriate;
- l. monitor incident trends to identify methods of reducing accidents;
- m. ensure the necessary records are maintained relating to accidents associated with the work of the school;
- n. make an annual report on health and safety matters including buildings and safety management to the Governing Body;
- o. ensure safety procedures are developed and adhered to for operations carried out within the School by their staff and by outside contractors under their control;
- p. ensure, in conjunction with the Heads of Department, that health and safety is considered as an integral part of the curriculum and lesson planning;
- q. ensure that departmental inspections are carried out at regular intervals and that necessary remedial action is carried out.
- r. ensure that health and safety is considered as an integral part of teaching;
- s. instigate appropriate disciplinary action where it is shown that staff have ignored or shown a disregard for health and safety matters outlined within the Safety Policy, School Codes of Practice or health and safety legislation;
- t. ensure that premises safety inspections are carried out at specified intervals e.g. weekly, bi-termly, recorded and that necessary remedial action is carried out;
- u. ensure that health and safety is taken into account when considering any proposed or impending changes e.g. building works, room allocate or usage, etc;
- v. ensure that emergency procedures and fire evacuation practices are in place within the school;
- w. investigate and advise on hazards and precautions;
- x. have a general oversight of health and first aid matters; monitor the general safety programme; publicise safety matters;
- y. ensure all full and part-time staff receive appropriate health and safety training at induction which must include emergency arrangements (i.e. first aid, fire and accident reporting), and specific sections of the Health and Safety Policy are discussed to ensure that new members of staff are aware of their responsibilities and any restricted tasks and activities;
- z. to monitor student health records prior to entry and to report/advise the Health and Safety Co-ordinator of illnesses that need to be brought to the attention of specific staff (e.g. epilepsy);

- aa. ensure adequate numbers of staff are provided with appropriate training so that they may support the following management arrangements:
- First aid;
 - Fire and emergency evacuation;
 - Risk assessments, including fire, display screen equipment, manual handling, substances and general risk assessments.

The Deputy Head (overseeing Curriculum) or in their absence, the Deputy Head (overseeing Behaviour and Attendance) will assume these duties in the absence of the Headteacher and has the authority to make and implement decisions throughout the school at any level if there is:

- immediate danger, or,
- dangerous practice, or
- breach of the law.

3.3 Health & Safety Co-ordinator

The Health and Safety Co-ordinator is responsible for the co-ordination of health and safety management on behalf of the Headteacher throughout the school and in particular, will

- a. make an annual report, in conjunction with the Site Manager and assisted by the Heads of Departments, on safety matters to the Headteacher and the Governing Body;
- b. assist with inspections and safety audits;
- c. investigate and advise on hazards and precautions;
- d. develop and establish emergency procedures, and organise fire evacuation practices within the school;
- e. have a general oversight of health and first aid matters;
- f. monitor the general safety programme;
- g. make recommendations to the Headteacher and governors for matters requiring immediate attention, e.g. safety reports;
- h. make recommendations to the Headteacher on matters of safety policy in compliance with new and modified legislation;
- i. publicise safety matters;
- j. liaise with outside bodies concerned with safety and health e.g. Health and Safety team at County Hall;
- k. investigate with the Headteacher any incidents to ensure that learning outcomes are applied to future practice and prevent reoccurrence;
- l. monitor accidents to identify trends and introduce methods of reducing accidents.

3.4 The Educational Visits Co-ordinator will:

- a. be involved in educational visit management in order to ensure that the Children's Services Offsite Activities and Educational Visits, Regulations and Guidelines are followed;
- b. work with group leaders to ensure that the aims of the educational visit are achievable and in line with those of the establishment;
- c. after discussion with the Headteacher and Governing Body, either approve

- proposal or submit to the County Council's Outdoor Education Adviser;
- d. ensure that all educational visits meet the Children's Services requirements;
- e. confirm that adequate risk assessments have been carried out;
- f. support the Headteacher in the management of and evaluation of educational visits;
- g. confirm the leadership of the group is appropriate, including the accompanying staff and volunteers.

3.5 Heads of Department

Each Heads of Department is responsible to his or her manager for the provision of safe working conditions for staff and students and in particular will:

- a. prepare reports on safety matters for the meeting of the School Health and Safety Committee;
- b. nominate, in conjunction with their manager, teachers responsible for particular classrooms, laboratories and workshops and the associated equipment;
- c. notify the Health and Safety Co-ordinator of any proposed or impending changes affecting safety, health and welfare, in room allocation or usage;
- d. ensure safety inspections of their designated areas are carried out and to ensure hazards identified from those inspections are rectified;
- e. instigate and ensure that safety procedures are developed and adhered to for operations carried out within the section ensuring that these are in line with curriculum codes of practice issued by Children's Services Department e.g. Science, Design Technology, PE, etc;
- f. carry out or allocate the undertaking of risk assessments which include manual handling, COSHH, and to ensure details are documented and that appropriate action is carried out;
- g. undertake a visual inspection of equipment prior to use and ensure that portable electrical equipment is tested on an annual basis;
- h. ensure all accidents within the section are recorded in line with school policy and investigate reports of accidents and dangerous occurrences in their designated areas;
- i. ensure equipment, including personal protection equipment, is maintained in a safe condition and that substances hazardous to health are stored in a safe place;
- j. identify staff training and development requirements with reference to health and safety;
- k. attend to defect reports and recommendations from the Headteacher, Staff, Safety Representatives and the Health and Safety Co-ordinator;
- l. budget for safety equipment for their designated areas;
- m. circulate publicity relating to safety matters to staff within their control.

3.6 Teachers (including Cover Manager/Supervisors)

Teachers are responsible to their Director or Leader of Learning for the immediate safety of the students in their classroom, laboratory or workshop. Nominated teachers are responsible for particular classrooms, laboratories and workshops and their associated equipment and as such it is their responsibility to ensure that it is maintained to a high standard with respect to health and safety issues. Cover Manager/Supervisors will report back any issues to the respective Director or Director of Learning for the subject area that they have been covering the lesson for.

Additionally, each teacher will:

- a. undertake and implement risk assessments for specific activities and ensure that safe working procedures are followed personally;
- b. give adequate safety information regarding the activity being undertaken prior to the activity commencing and during the activity as and when required;
- c. ensure that special working procedures, protective clothing and equipment, etc are provided and used where necessary;
- d. ensure that clear instructions and warnings are given to students verbally as often as necessary;
- e. ensure that the classroom and other areas are tidy and good housekeeping procedures are followed;
- f. undertake a visual inspection of equipment prior to use and ensure that portable electrical equipment is tested on an annual basis;
- g. report defects and make recommendations to their line manager where necessary;
- h. ensure all accidents, incidents and near misses within the area of responsibility are recorded in line with the school policy.

3.7 Technician/Learning Support Professional

The Technician/Learning Support Professional is immediately responsible to the teacher whilst the class is in session, otherwise their line manager is the Director of Learning - Science (Science Technicians) or Head of Department – Technology & Enterprise (Art & DT/Food Technician) or SENCO (for Learning Support Professionals).

Additionally, the Learning Support Professionals/Technician will:

- a. follow safe working procedures personally;
- b. be familiar with the general and particular safety rules that apply to their area of work;
- c. ensure that the classroom and other areas are tidy and good housekeeping procedures are followed;
- d. undertake a visual inspection of equipment prior to use and ensure that portable electrical equipment is tested on an annual basis;
- e. report defects to their line manager;
- f. ensure all accidents, incidents and near misses within the area of responsibility are recorded in line with the school policy.

3.8 First Aid Co-ordinators

The First Aid Co-ordinators, when on duty are responsible for supporting health and welfare issues within the School and in particular will:

- a. be responsible for attending to and monitoring student or visitor illness/injury and to refer students to their own doctor or hospital as appropriate;
- b. maintain the school medical room and equipment;
- c. monitor student health records prior to entry and to report/advise the Health and Safety Co-ordinator of illnesses that need to be brought to the attention of specific staff (e.g. epilepsy);
- d. assist in the monitoring of first aid equipment and boxes on School site;
- e. assist in the development and health promotion activities at the School;

- f. ensure adequate numbers of staff are trained in first aid procedures and to co-ordinate the work of the First Aiders;
- g. ensure the necessary records are maintained relating to accidents associated with the work of the school.

3.9 Teacher in charge of the Library.

The Teacher in charge of the Library is responsible for the implementation of the safety policy and for the general oversight of organisation and arrangements within the library area of the School.

As part of their responsibilities they will:

- a. undertake and implement risk assessments for specific activities and ensure that safe working procedures are followed personally;
- b. be familiar with the general and particular safety rules that apply to their area of work;
- c. ensure, in conjunction with designated staff, that the library and other areas under their control are tidy and good housekeeping procedures are followed;
- d. undertake a visual inspection of equipment prior to use and ensure that portable electrical equipment is tested on an annual basis;
- e. report defects to their line manager;
- f. ensure all accidents, incidents and near misses within the area of responsibility are recorded in line with the school policy.

3.10 Careers and Work Experience

The Associate Assistant Head with CEIAG responsibilities, supported by the Careers Advisor, is responsible for developing procedures to ensure that students, placed with employers for work experience as part of their programme, are not subject to unacceptable risks and in particular they will:

As part of their responsibilities they will:

- a. ensure that all work placement providers are assessed prior to use for the first time;
- b. ensure arrangements are in place to comply with the guidelines issued by the County Council's Work Experience team (or other external provider) are implemented and monitored;
- c. assist in the assessment of placements where there are particular causes of concern;
- d. ensure risk assessments are carried out for young people employed by or on work experience placement with the school and communicated to parents/carers;
- e. ensure work experience employers are provided with written documentation indicating hazardous work areas/tasks that must not be undertaken by students unless proof of training/competence is available.

3.11 Managers/Staff with supervisory responsibilities within Support Staff teams

Each manager is responsible to their line manager for the provision of safe conditions for staff, students and visitors and will:

- a. attend to defect reports and recommendations from the Headteacher, staff, Safety Representative and Health and Safety Co-ordinator;
- b. conduct regular inspections of their area of responsibility and rectify hazards identified from those inspections;
- c. budget for safety equipment for their area of responsibility;
- d. instigate and ensure that safety procedures are developed for operations carried out within their area of responsibility;
- e. ensure that risk assessments, including manual handling, noise, COSHH, and visual display unit assessments are undertaken and documented and that appropriate action is carried out;
- f. ensure all portable electrical equipment is tested on a regular basis;
- g. ensure equipment, including personal protection equipment, is maintained in a safe condition and that substances hazardous to health are stored in a safe place;
- h. ensure all accidents, incidents and near misses within the area of responsibility are recorded in line with the school policy.

3.12 The Site Manager will ensure that:

- a. reports on health and safety matters with respect to the school buildings and grounds are prepared;
- b. safety procedures are developed and adhered to for operations carried out within the school by their staff and by outside contractors under their control. In particular they must ensure work complies with the Construction (Design and Management) Regulations;
- c. records of hazards identified on site by staff are kept, along with the remedial action taken and when;
- d. when liaising with contractors, assume the duties as outlined in 3.15 below;
- e. routine maintenance checks and inspections required by legislation of fixed service equipment, i.e. boilers, pressure vessels etc. are undertaken;
- f. the provision and maintenance of all 'fire' equipment and for the preparation and review of Fire Risk Assessments;
- g. ensure all accidents within the area of responsibility are recorded in line with the school policy.

3.13 The Site Team will:

- a. ensure that routine maintenance checks and inspections required by legislation of fixed service equipment, i.e. boilers, pressure vessels etc. are undertaken;
- b. ensure that premises safety inspections are undertaken e.g. weekly, bi-termly, and keep records of any faults identified (if appropriate);
- c. attend to defect reports and recommendations from the Headteacher, staff, Safety Representative and Health and Safety Co-ordinator;
- d. ensure that all portable electrical equipment is tested on an annual basis;
- e. ensure all accidents within the area of responsibility are recorded in line with the school policy;
- f. ensure equipment, including personal protection equipment is maintained in a safe condition and that substances hazardous to health are stored in a safe place.

3.14 Trade Union Safety Representative

In accordance with the Safety Representatives and Safety Committee Regulations the safety representative will, where appointed:

- a. represent the employees in consultation with the employer and with their representative; investigate potential hazards and dangerous occurrences at the workplace and examine the causes of accidents at the workplace;
- b. investigate complaints by any employee he/she represents relating to health and safety and welfare at work;
- c. represent employees in consultations with inspectors of the Health and Safety Executive and of any other enforcing authority;
- d. receive information from Enforcement Inspectors;
- e. attend meetings of safety committees to which they are elected;
- f. inspect the workplace if they have given the employer or their representative reasonable notice in writing of their intention to do so and have not inspected it in the previous three months. He/she may carry out additional inspections where there are substantial changes in work conditions.

3.15 Staff Liaising with Contractors

Staff liaising with contractors carrying out work at the school should bear in mind that they have a responsibility to take appropriate action if they observe the contractor or his employees using any working practice or item of equipment which the member of staff considers to be dangerous or potentially dangerous. Such action could include reporting the matter to the Site Manager for them to rectify or, failing that, reporting to the Health and Safety Co-ordinator .

Staff must ensure that contractors arriving at site, must report to Reception and a nominated person ensures that the contractors are informed of any hazards on the school site e.g. asbestos. Approval must also be gained by the contractor to start work. Only those staff nominated by the Headteacher to liaise with the contractors must undertake this activity due to the procedures put in place by the school to implement the County Council's Asbestos Management in the Workplace Policy and the Safety Management of Contractors Policy.

3.16 Members of Staff Generally

Each member of staff is responsible for his or her personal safety and that of other persons in the School by the proper observation of School rules and procedures (e.g. by ensuring visitors report to the Reception Area on arrival at the school).

Staff are reminded of the general duty imposed by the Health and Safety at Work etc. Act 1974 at Sections 7 and 8:

'It shall be the duty of every employee while at work

- a) to take reasonable care for the health and safety of himself and other persons who may be affected by his acts or omissions at work, and,*
- b) as regards any duty or requirement imposed on his employer or any other person by or under any of the relevant statutory provisions, to co-operate with him so far as is necessary to enable that duty or requirement to be performed or complied with.'*

'No person shall intentionally or recklessly interfere with or misuse anything provided in the interests of health, safety or welfare in pursuance of any of the relevant statutory provisions,'

3.17 Students

Each student is responsible for their personal safety and that of their colleagues by proper observation of school rules and procedures.

In particular, each student will:

- a. observe standards of dress and behaviour appropriate to the working situation.
- b. heed warnings and observe rules and ask for such warnings and rules where they are not made obvious.
- c. not wilfully misuse, neglect or damage things provided for safety.
- d. observe rules highlighted under the students responsibilities within the "Behaviour for Learning in a Nurturing School" policy.

4. Provision of competent health and safety advice

To ensure compliance with legislation, the East Sussex County Council Health and Safety team will:

1. advise on health and safety legislation and best practice. This supports and enhances the policy, guidance documents and model templates that are issued to ensure compliance with health and safety legislation.
2. provide access to a web based auditing tool and inclusion within the audit programme to support compliance with health and safety legislation and best practice.
3. visit site to provide advice and guidance on a range of health and safety topics.
4. publish health and safety newsletters to keep health and safety co-ordinators up to date on health and safety legislation.
5. provide an onsite induction for new Executive Headteachers, Headteachers, Heads of School and Health and Safety Co-ordinators.
6. provide access to the ESCC online incident reporting system and completion of RIDDOR reportable accidents to the Health and Safety Executive by the Health and Safety Team.
7. undertake the role of Radiation Protection Officer for schools.
8. provide access to a CLEAPSS Certified Radiation Protection Adviser.

The East Sussex County Council Health and Safety Team are:

- Kim Hicks CMIOSH (Chartered Member of IOSH) with a total of 28 years' experience in H&S, 23 of those years within the education sector
- Rebecca Courtneidge Grad IOSH (graduate member of IOSH) with 11 years' experience in H&S within the education sector.

5. Health and Safety Committee

The Health and Safety Committee representing the various groups within the School is comprised of:

- Business Manager with Health and Safety Co-ordinator responsibility (Chair)
- 1 Member of the Governing Body (Link Governor)
- Deputy Head
- Heads of Department of Technology & Enterprise (DT)/Science/PE
- Union Safety Representative (at least 1 representative from a teaching staff union)
- Site Manager
- Educational Visits Co-ordinator (EVC)
- Support Staff representation, to include Student support/medical staff in charge of first aid/welfare

Where possible efforts must be made to ensure as wide a spread of curriculum and support areas of the school are represented at each meeting.

5.1 Overall Function and Objective:

To provide effective communication and consultation between both management and employees, to ensure that the health and safety policy is properly maintained and developed.

5.2 Specific Functions:

- To consider information, statistics and reports relating to health, safety and welfare matters affecting the operational area within the purview of the Committee generally and to make recommendations/observations to the Senior Leadership Team (SLT) and the Governing Body accordingly.
- To consider and make recommendations to the Governing Body regarding individual health and safety problems which have not been resolved at operational management/ safety representative level.

Note: The School Health and Safety Committee, before considering any individual health, safety and welfare problem, shall satisfy itself that all possible steps have been taken to resolve the problem at departmental/ section level. The Committee shall normally not consider such cases until the above action has been taken. In the event of a safety matter not being resolved within the Committee, any representative is free to take the matter up with the Governing Body through their staff representative.

- To develop policy to improve and maintain health and safety issues for staff and students.
- To encourage the implementation and maintenance of effective safety rules and practices at departmental level.
- To encourage effective communication regarding health, safety and welfare matters.

6. Crisis Management

A crisis management team has been set up to assist in the reduction of major hazards and risks and to action a recovery plan in the event of a serious incident. A separate Crisis Management Plan has been developed by the school and the role of the Crisis Management Team is summarised below.

6.1 Crisis Management Team:

- The Headteacher;
- Deputy Headteacher(s);
- Health and Safety Co-ordinator(Business Manager);
- Site Manager;
- Headteacher's PA
- IT Network Manager
- Chair of Governors and/or Health and Safety Governor.
- [Plus suitable nominated reserves to above]

6.2 Function of the Crisis Management Team:

- To develop the School Crisis Management and Business Continuity Plans that will be used for handling emergency situations and disruption to school operations.
- To act as the decision-making authority for the management of an incident.
- To develop the procedures and practices to be used for handling emergency situations and communicating these to all employees of the organisation.
- To establish and maintain a crisis management centre. The centre will have the necessary equipment available for rapid activation during an emergency. The equipment includes communications equipment, emergency plans and procedures, a log to record all actions taken during the crisis, necessary office equipment and supplies and appropriate maps and building plans.
- To assess the nature, degree and likelihood of threats to the organisation's interests (personnel, facilities, information and other assets) in order to determine the vulnerability to those threats of the organisation's personnel, facilities or assets.
- To test the crisis management plan on a regular basis to ensure that it is feasible and realistic. Whenever the plan is found to be deficient immediate corrections will be made.

7 General Emergency Procedures

The summoning of emergency services is via the Heads PA and/or staff on Reception. Out of school hours, please contact emergency services by dialling 9 - 999 and the on-duty member of the site team.

In the event of a major disaster the Crisis Management Team (see above) must be alerted.

8. Fire Procedures (also see Fire Safety Policy)

The signal for evacuation will be the continuous ringing of the fire bell. Always evacuate the school if the fire alarm sounds – assume every alarm could be for real. Never re-enter the building while the alarm is still sounding or before a senior member of staff has confirmed it is safe to do so.

On hearing the alarm, leave the room you are in and proceed to the nearest safe exit out of the building, switching off the lights, closing the doors and windows as exiting the room.

Everyone must walk swiftly – not run – and take no belongings with them.

When outside the building assemble the students at the assembly point, which would be on the main school playground (unless deemed unsafe to do so by a designated senior member of staff, when an alternative location, on the school playing field alongside the boundary hedge that borders Broad Road, will be used). Check that all students/visitors/volunteers, etc are accounted for.

Assembly Points: Main school playground located at the back of the school, (students in tutor group order) or if this assembly point is considered unsafe, to locate on the main playing field lining up from the hedge bordering Broad Road, (again in tutor group order) between the two posts, that mark out both the start and end of the student assembly lines.

Pastoral Support Leaders and/or Student Support Staff are responsible for taking the registers to the designated assembly point and tutors will collect their register from them and report to them once their register has been taken, reporting any missing students to their Head of Year and/or member of the Senior Leadership Team.

Nominated staff in Reception are responsible for taking staff registers and visitors book to designated assembly points and checking that all staff/visitors are accounted for, reporting any missing staff/visitors to a member of the Senior Leadership Team.

Teaching and Cover Supervisor staff must know the correct route for evacuating the class which they are teaching, and it is the responsibility of the Headteacher to define the route and inform all members of staff. They are responsible for maintaining clear access to that escape routes at all times, and for helping to maintain access to the other escape routes. Teachers and Cover Supervisors will be responsible for evacuating volunteers or other visitors to their classrooms in an emergency. Lunchtime Duty Supervisors must be familiar with the necessary evacuation procedures when on duty.

Site staff will check the toilets. The Site Manager will arrange for any supplies of gas and/or electricity to be turned off should the need arise.

The Health and Safety Co-ordinator will organise practice fire evacuations as appropriate, but at least once every other term and (ideally) before the end of the first fortnight. Each fire drill will be recorded in the fire log by the Health and Safety Co-ordinator, and monitored for effectiveness by the Headteacher.

The extinguishers will be serviced and maintained as part of an annual contract. This contract will be monitored via the premises inspection. Any faults must be reported to the Site Manager and/or Health and Safety Co-ordinator for immediate remedial action. Emergency evacuation notices are displayed in all classrooms. The Site

Manager will ensure that these notices are displayed in a prominent position as part of the premises inspection.

Any student with special needs must be given special consideration by their tutor/class teacher, as to whether or not a Personal Emergency Evacuation Plan (PEEP) is required. This will need to be devised with the Health and Safety Co-ordinator, in conjunction with the Student support/medical team, if the tutor/class teacher or SENCO identify a particular problem.

A **fire risk assessment** has been completed for these premises and will be reviewed on an annual basis or when any changes occur.

9. Bomb Incident Management

Any member of staff who receives information regarding a bomb on-site must immediately inform the Headteacher or a member of the Senior Leadership Team in their absence. The Bomb Threats Action Card available within the Crisis Management Plan document and on separate laminated card, should also be used.

Unlike fire evacuations it is difficult to define clear, mandatory guidelines that must be followed. Some decisions must be made at the time in question depending upon the actual circumstances. Therefore, the Crisis Management Team will liaise with the Children's Services Department, Police and the Fire and Rescue Service and follow their advice on the evacuation procedure and assembly point. This will then be communicated to staff, students, visitors, etc by an appropriate means.

However, a pre-defined bomb evacuation assembly point should be identified, having been considered prior to evacuation. Staff should be familiar with this point and have considered how to evacuate the school (including those with PEEPS).

10. First Aid Procedure (also see the First Aid Policy)

There will be at least 6 people on the staff who will have a current full first aid training qualification, with the aim that there should be one qualified person on site at any one time.

The named first aiders for the school are listed in Appendix A at the end of this document and also published in school on the first aid signs that are located in each classroom, communal areas and in offices.

First aid boxes are kept in the Student Support/Medical Office, Reception, Staffroom and in the two school minibuses. The First Aid Co-ordinators in Student Support/Medical provide first aid support and maintains a central supply of first aid materials to supplement first aid boxes. Parents/Carers will be expected to inform the school if their child has an allergy and a list of any such children will be kept and displayed.

All injuries which come to staff attention, no matter how slight, should be recorded on the minor injuries records database, known as "Medical Tracker" and/or County Council's on-line incident reporting system.

In case of doubt as to whether or not a child's parent/carer should be immediately alerted, contact Student support/medical for advice. Staff are to err on the side of

caution. In the event of an accident, if the parents/carers (and their nominated contacts) are unavailable, we may consider it wise to send a student directly to hospital. In these cases, the student will be accompanied by a member of staff.

The school will communicate to parents/carers a summary of the arrangements for first aid and accident reporting, in such cases.

11. Incident/Accident Recording and Reporting (also see the Incident Reporting and Investigating Policy)

In the event of an accident the following procedure must be followed:

- render any equipment inoperative.
- summon assistance.
- if the injury is of a minor nature ensure follow-up treatment is carried out by reporting to the qualified First Aider.
- if the injury is of a major nature then an ambulance should be summoned immediately without undue delay attempting to contact parents or carers.
- if the injured is mobile then they should be taken for emergency treatment to the Hospital. The Health and Safety Co-ordinator is responsible for arranging for a member of staff to transport the student/staff to hospital.

No student may be sent to hospital unless accompanied by an adult. The member of staff taking the injured person should:

- stay with the injured person and return with them; or
- stay with the injured person until the parent/carer arrives at the hospital and return to school.

All staff must report any incident, accident (including violence), dangerous occurrence or near misses involving themselves or visitors/volunteers by recording the details on the County Council's on-line incident reporting system. The Student support/medical Team will assist with the recording of these details. Student accidents, depending on the severity will be reported either on the minor injuries form and/or County Council's on-line incident reporting system.

Specified categories of incidents are reportable to the HSE and these will be undertaken by the ESCC Health and Safety team.

All accidents will be investigated to prevent re-occurrence. The Health and Safety Co-ordinator will monitor the accidents to identify trends. The Governors Health and Safety committee will also receive information on accidents at each meeting.

12. Health Issues

12.1 Smoking (also see the No Smoking at Work Policy)

In an effort to reduce the risk to health from passive smoking, there is a No Smoking Policy in place. For the purposes of this policy this includes e-cigarettes.

12.2 Alcohol and Drug Abuse (also see the Drugs and Alcohol at Work Policy)

Staff attending work while under the influence of alcohol or drugs creates an unprofessional image of the school and increases the risk of accidents both to themselves and to colleagues. To minimise the probability of accidents from alcohol or drug abuse, staff whose judgment is impaired will be excluded from work and will be subject to disciplinary procedures.

If you are feeling depressed or anxious about either your work or social situation alcohol or drugs will not provide a long term solution. Support is available from the County Council's staff counselling service. This is a confidential service and they can be contacted on 0333 212 8382, the service is available 24 hours a day, 365 days a year. The School also offers its staff a 50% contribution to the Benenden Health Care scheme, which covers counselling as well as other forms of medical and emotional support.

Some drugs prescribed for medical reasons are likely to impair judgment and lower concentration. If you feel you are affected when on medication please inform your line manager so that additional arrangements may be made to safeguard you while at work.

12.3 Staff Wellbeing (also see the Stress Management Policy)

Stress is defined by the Health and Safety Executive (HSE) as "the adverse reaction people have to excessive pressures, or other types of demands placed on them." This distinguishes stress from the pressures or challenges that provide the motivation for everyday living. Being under pressure can often improve performance but when demands and pressures become excessive, they can lead to stress.

People respond to pressure in different and individual ways. Much will depend on an employee's personality, experience, motivation and the support available from managers, colleagues, family and friends. Difficulties faced outside of work can also have an impact on someone's ability to cope or function well at work.

If stress is intense and sustained it can lead to mental and physical ill-health and contributes to employee ill-health and sickness absence. It is important that all staff are aware of the factors that can give rise to stress (stressors) so that where possible their causes can be foreseen and appropriately managed before damage/harm is done. The Headteacher will liaise with staff in identifying the individual stressors and, where practicable, steps will be taken to minimise/eliminate these stressors.

Workloads and stressors will be monitored on an on-going basis as part of 1:1 reviews.

Support is available from the County Council's staff counselling service. This is a confidential service and they can be contacted on 0333 212 8382, the service is available 24 hours a day, 365 days a year. The Benenden Health Care scheme as noted in 12.2 is also available to our staff in order to provide further support in respect of our workforce wellbeing.

12.4 Protecting pregnant workers and new mothers (also see the Pregnancy, Childbirth and Breastfeeding: Risk Management Policy)

Pregnancy should not be equated with ill health. It should be regarded as part of everyday life and its health and safety implications can be adequately addressed by normal health and safety management procedures.

Many women work while they are pregnant and many return to work while they are still breast feeding. Some hazards in the work place may affect the health and safety of pregnant workers, new and expectant mothers and of their children. The policy sets out the known risks to new and expectant mothers and gives advice on what needs to be done to comply with the law.

Procedure

- Staff (full and part-time) are required to inform their Line Manager and the Personnel Section as soon as possible and in writing when pregnancy has been confirmed.
- The Line Manager will undertake a risk assessment of the employee work activity to ensure no risk to the health of the employee or the unborn child. Copies of the risk assessment will be kept and will be reviewed if circumstances surrounding the pregnancy alter in any way.
- The Health and Safety Co-ordinator is available to give advice at any stage of the process, but the general principles of common risk assessment will apply.

12.5 Communicable Diseases (also see the Communicable Diseases Policy)

Attending face to face education is important for students' health and their future. As we learn to live safely with coronavirus (COVID-19), the imperative remains to reduce disruption to children's education.

Good personal hygiene precautions are crucial to prevent the spread of infections and hand washing is the single most important intervention in the control of cross-infection.

Prompt exclusion of students and staff who are unwell with an infectious disease is essential to preventing the spread of infection at school. There is a local policy for the appropriate removal of students and staff while they are likely to be infectious and a procedure for contacting parents and/or carers when students become unwell at school.

Refer to the 'Communicable Diseases Guidance for Schools' document for:

- guidance on proportionate control measures to help manage the spread of infection
- guidance on who to contact for help and advice in relation to problems with communicable diseases at school
- basic information on common communicable diseases, and guidance on where to get further up to date information

- information on the role of local UK Health Security Agency Health Protection Teams.

13. Risk Assessments and Guidance Notes/School Codes of Practice (also see Risk Assessment Policy)

Specific risk assessments are required for activities involving fire, manual handling, substances and the use of display screen equipment while more general risk assessments must be completed for those activities where specific assessments have not been carried out.

Although risk assessments relating to most activities of the school will have been or will be completed on your behalf, all staff have a responsibility to make themselves familiar with both the general and the specific risk assessments relating to your area of work. Copies of these assessments are held by the Health and Safety Co-ordinator as well as being electronically available on the shared area of the network.

The following staff will complete risk assessments for the areas highlighted below:

- Premises Site Manager (with the Health and Safety Co-ordinator)
- Curriculum Heads of Department, other teaching staff as applicable
- Off-site Visits Educational Visits Co-ordinator
- Individual/specific Line Manager, as applicable

Areas of work or activities that are deemed to be more hazardous are likely to have detailed, documented arrangements to minimise the associated risks. It is the responsibility of staff to make yourself aware of the contents of those relating to your area of work.

Various Codes of Safe Working Practice and guidance issued by East Sussex County Councils Children's Services Department and the Department for Education are available either in school or by accessing on the Web. Appropriate information is also held at Departmental level. All new and existing staff should be made aware of the contents relevant to them.

The Children's Services Department has published guidance on Off-site Activities and Educational Visits which details clear procedures to be followed when planning and arranging a visit.

13.1 Departmental Health and Safety Policies

All Heads of Department are responsible for drawing up and maintaining policies for Health and Safety within their Departments. These policies will be consistent with the school policy and will reflect the specific needs, practices and hazards relating to the Department.

These Departmental Policies will be part of the Departmental Guidelines issued to all members of staff teaching or working within the Department and held by the Health and Safety Co-ordinator.

14. Specific Hazards

Schools are not generally considered as dangerous places to work in, but they can still create risk of injury or to health. The hazards relevant to this school are detailed below along with the safe procedures put in place to manage the associated risks.

14.1 Asbestos (also see the Asbestos Management in the Workplace Policy)

The school has had an asbestos survey completed for the premises and staff will be informed of the locality of any asbestos containing materials within the school and should record that this has been undertaken. Asbestos materials in good condition are safe unless asbestos fibres become airborne, which may happen when materials are damaged. It is essential that where asbestos has been identified that staff follow the safe working systems within the school and ensure that the fabric of the building is not disturbed and follow the escalation procedure in the Asbestos policy where damage to an asbestos material has been identified. The Site Manager has been nominated to liaise with contractors to ensure that they are provided with relevant safety information and will approve works to be undertaken in school. The Health and Safety Co-ordinator is responsible for the development and reviewing of the asbestos management plan for the school.

14.2 Legionella (also see the Legionella Policy)

The risk of contracting Legionellosis from our water system is low, but a managed approach to the condition and use of water systems is vital to manage risk, raise awareness of standards and ensure compliance with specific statutory requirements. Therefore, a process is in place to commission a risk assessment of our water systems that will be reviewed on a bi-annual basis or where there has been a physical change to the water distribution system along with the risk assessment recommended regular monitoring undertaken by the Site Manager.

14.3 Contractors (see also the Contractor Management Policy)

Any contractor working for the school must be effectively managed from a health and safety perspective, for both legal and operational reasons. We ensure that contractors are competent to undertake works by using the County Council's approved list or by completing a contractor assessment questionnaire. Most works will be planned for out of school hours and in school holidays, however, staff will be informed when contractors will be on site. Pre-start meetings will take place to ensure any impact is minimised. Please see 3.15 of this document for further information on liaising with contractors.

Safe system of work (see Appendix 1 of the Contractor Management Policy)

The Headteacher must be aware of and agree a safe system of work with contractors for activities carried out on the school site. This will include arrangements for safe access and a safe place of work on the premises; the contractor's response to emergency situations (e.g. fire evacuation); contractor's appropriate and safe interaction with staff, students, service users, and others on the premises who may be affected by their conduct and work.

Permit to work

A formal Permit to Work will be required for high risk activities such as hot work (see template available on webshop). These are the contractor's responsibility but the school should ensure they understand what the work entails and are appraised on any elements likely to impact on the health and safety of everyone else on the premises.

14.4 Gas and heating systems

All gas and heating systems will be regularly maintained by competent contractors. Any faults should be reported to the site manager/caretaker.

14.5 Security (see also guidance for schools on security)

Arrangements are in place for the school site to be as secure as possible and in line with East Sussex County Council guidance. A risk assessment has been undertaken to ensure that adequate controls are in place and it is essential that staff follow these procedures.

14.6 Display screen equipment (also see the Display Screen Equipment Policy)

The school has a nominated DSE Assessor and a Workstation self assessment is undertaken to identify those staff who, through extended periods of their day spent working at a computer, would be considered as DSE 'users'.

The nominated DSE Assessor will ensure that all workstations (excluding student workstations) comply with the minimum standards as detailed within the County Council Policy. Employee workstations are assessed to identify the risks to health and safety and to remove and reduce any risks to the lowest practicable level.

DSE 'users' are entitled, if they wish, to an eyesight test, particularly if they are experiencing visual difficulties associated with the use of DSE, and if they request it.

The optician's fee for the eyesight test will be reimbursed by the school. The standard letter must be completed by the employee *prior* to the eye test, and taken to the optician. The employee must return the completed form to their line manager after the test.

If the optician confirms that a user requires new visual correction specifically for work with DSE, as indicated by a tick in box 3 of the Optometrist's Report, the school will pay a contribution towards the cost. It should be noted that some users who already wear glasses may or may not need special glasses for display screen work.

14.7 Electrical Equipment (also see the Electricity at Work Policy)

All staff are responsible for ensuring that they use and handle electrical equipment sensibly and safely. Any student or volunteer who handles electrical appliances does so under the supervision of the member of staff who so directs them.

All electrical equipment is checked annually under the terms of the maintenance contract. The Site Manager is responsible for maintaining accurate records and ensuring that all equipment in current use is checked and for making arrangements for the equipment to be accessible.

If there is any doubt about the safety of the equipment it will not be used. Any potential hazards will be reported to the Site Team immediately.

The Headteacher must be aware of, and approve the use of any item being brought into schools by a member of staff, volunteer or a student. The Headteacher must be aware of and approve the arrangements for temporary electrical extensions required for drama productions, Christmas decorations etc.

14.8 Machinery and Equipment (see also Work Equipment Policy)

There is a list of all equipment owned by the school and this is kept by individual departments. Maintenance schedules are in place to ensure that all equipment is safe. Guidance notes will be kept individually by departments on the relevant machinery and equipment used by their staff and students.

Where manufacturers instructions are not available, the Director or Leader of Learning will prepare instructions for maintaining the equipment, for machinery and will liaise with the Health and Safety Co-ordinator to obtain such advice as may be needed for preparing those instructions. A copy of the instruction will be exhibited close to the equipment or machinery to which it relates.

14.9 Moving and Handling (also see the Manual Handling Operations Policy)

All equipment must be moved safely. Large pieces of equipment will only be moved by people who have received training. PE equipment may be moved by students but they must be given clear instruction in the correct way to lift and handles items. Close supervision is appropriate at all times.

The Health and Safety Co-ordinator, in conjunction with the Site Manager will be responsible for undertaking risk assessments for moving and handling tasks, including those activities carried out by students. Training will be offered to those staff who are expected to lift objects. If you are apprehensive about your capability to move goods, equipment or furniture, please either ask for help or do not undertake the activity.

Where lifting equipment is provided, only those members of staff who have been trained in the use of the equipment may undertake this activity.

If there is a requirement for students be moved, the Headteacher will arrange for training for specific staff.

14.10 Work at Height (also see the Work at Height Policy)

All work at height must be properly planned and organised to ensure they are carried out safely. The hierarchy to follow is:

- Avoid work at height if at all possible
- If work at height is unavoidable, control measures must be put in place to

- prevent falls
- Where the risk of falling cannot be prevented, control measures must be put in place to minimise the distances and consequences of a fall.

The selection and inspection of suitable equipment is an essential control feature. Chairs, furniture or other equipment not designed for this purpose must not be used to work at height or access.

Work at height activities will only be carried out by staff who are **competent and authorised** for the work involved and work will only commence when risk assessments and safe systems of work are in place and understood.

The Site Manager will be responsible for undertaking risk assessments for work at height tasks.

‘Toolbox’ talks are given by the Site Manager and/or Site Team, to staff using stepladders four rungs or below, in height.

14.11 Vehicle Safety in Schools

Vehicles at work are a major cause of fatal and major injuries nationally every year. All schools have deliveries and waste collections on their sites and some also have provision of parking. All vehicle movements must be considered in relation to how traffic is managed. A risk assessment has been undertaken and it is essential that staff follow these procedures.

All staff and visitors driving into the premises, should adhere to the 5mph signage as identified on the school site and large vehicles such as waste collections, ambulances etc are required to wait and follow the designated site team member who will oversee the safe movement of said vehicle whilst on the premises.

The Site Manager is responsible for ensuring vehicle safety arrangements are in place including risk assessments.

14.12 Managing Slips, Trips and Falls (also see the Workplace Health, Safety and Welfare Policy)

The risk of injury within the workplace is most likely to be caused by the more mundane hazards such as cluttered walkways, as a result of poor housekeeping. Trips and falls can be caused by trailing cables, objects left on floors, traffic routes blocked within the classroom. It is the responsibility of the teacher to ensure that their classroom has clear traffic routes and that exit routes are kept clear. The site team will undertake an inspection whilst opening the school each morning to ensure that communal areas are free from trip hazards, etc. The site team will report all hazards, obstructions, defects or maintenance requirements to the Health and Safety Co-ordinator. It is the duty of all staff to be vigilant and aware of possible hazards. If any spillages occur, these should be dealt with immediately. A risk assessment has been undertaken for the school site and it is essential that staff follow these procedures.

The school will be cleaned as per the cleaning schedule and will be monitored by the Site Manager. All waste will be disposed of according to appropriate health and safety guidelines.

14.13 Waste Disposal

All waste will be disposed of according to appropriate health and safety guidelines. Arrangements are in place to collect, store and dispose of waste via licensed contractors with the appropriate paperwork completed. Special arrangements have been made for the storage and disposal of hazardous waste with records kept. Where necessary, special arrangements have also been made for the storage and disposal of clinical waste.

14.14 Violence at Work (also see the Violence and Aggression at Work Policy)

All staff must report to their line manager/headteacher any incident of aggression or violence (or near misses) directed to themselves from any source. All incidents of violence will be reported via the County Council's on-line incident reporting system.

After an incident, the line manager or headteacher will meet with the member of staff concerned to check on their wellbeing and identify if further support is required. A wellness plan will be discussed and devised (if considered necessary).

Support is available from the County Council's staff counselling service. This is a confidential service and they can be contacted on 0333 212 8382, the service is available 24 hours a day, 365 days a year. The Benenden Health Care scheme as noted in 13.2 is available to our staff in order to provide further support in respect of our workforce wellbeing, should this be considered appropriate.

14.15 Lone Working (also see the Lone Working Policy)

Site staff operate a walkie-talkie system during the extended school day in order to communicate with each other, which can be used in an emergency scenario where staff are working in remote areas. Site staff also use mobile phones in order to ensure contact is maintained particularly out of hours, and other security measures such as CCTV and controlled access areas, in order to ensure safe working practices.

14.16 Off-site Visits

The school has a separate policy on offsite visits. Staff must ensure that prior to planning or accompanying an offsite visit, that they are aware of the school and Children's Services Offsite Activities and Educational Visits Policy.

14.17 Work Experience Placements (also see the Work Experience Policy)

The school has a separate policy on the arranging of work experience placements. As specific legislation applies to young workers including students on work experience, it is essential that the school's work experience policy is followed.

14.18 Hazardous Substances (also see the Control of Substances Hazardous to Health (COSHH) Policy)

Responsibility for implementation for the Control of Substances Hazardous to Health (COSHH) Regulations, annual review and (where necessary) updating has been delegated to Heads of Department. The main departments that use these types of substances are Art & Design Technology, Science, Resources and the Site team.

The legislation requires that any substance used in the school must have a product safety data sheet, and that hazard and risk assessments for that substance be carried out, maintained in written form, and available to the users.

A record of the arrangements currently in force will be maintained by the Health and Safety Co-ordinator. It may be inspected by the staff (or, indeed, by the Health and Safety Executive) at any time.

Any colleague unsure of their position in relation to COSHH may consult the Health and Safety Co-ordinator.

14.19 Radiation

The Science Department holds a selection of radioactive substances. A Radiation Protection Supervisor has been nominated within the school along with a Radiation Protection Officer for Children's Services (via the ESCC Health and Safety Team). The Radiation Protection Adviser is appointed by CLEAPSS on behalf of the school and local authority. The role of the Radiation Protection Supervisor and Officer is to ensure that the school complies with the Ionising Radiations Regulations. Further information is contained in the Science Department's safety policy.

14.20 Pressure Systems

All pressure vessel systems in the school will be listed on the inventories of the departments concerned.

All pressure vessel systems in the school will be subject to annual inspection by an County Council appointed contractor. Safety certificates for all such systems will be displayed in the vicinity of the system concerned. Systems identified as faulty will be removed from use at once.

Written inspection and reporting schemes for affected items are kept by the Health and Safety Co-ordinator and must be consulted prior to any inspection

14.21 Noise at Work

All members of staff need to be aware of "nuisance noise" and respect the needs of others in the school. Common sense and courtesy by all members of staff, students and visitors to the school will prevent problems arising.

Any member of staff or visitor detecting a potential problem will report immediately to the Health and Safety Co-ordinator.

14.22 Hiring of school premises

The Headteacher must be satisfied that the hiring organisation will use the school premises in a safe manner. A signed, written hiring agreement will be completed and copies kept. Copies of hiring agreements are held in the Health and Safety Co-ordinators office. The school will maintain the premises being let in a safe condition and communicate any unsafe conditions or hazards with the hirer. It is the responsibility of the hirer to ensure there is adequate first aid arrangements in place and to report any hazards/ defects or incidents involving the premises/ any leased equipment following the schools hazard/ incident reporting procedures.

15. Use of Minibuses and Other Vehicles

The Guidelines for Minibus Operation apply to all minibuses and other large passenger-carrying vehicles e.g. people carriers and are also the minimum standards to be applied to any vehicle hired for use on school business.

Eligibility to Drive – All drivers must :

- be aged 23 and under 65 and have held a full current driving licence for at least three years without claim or conviction;
- be authorised by their line manager to drive a minibus;
- have passed the ESCC Minibus Driver Training and Assessment.

Drivers of vehicles on the school site are subject to all normal regulations including the wearing of seat belts and crash helmets. A speed limit of 5 mph is imposed on vehicles on site. Drivers of all vehicles, whether car or motor cycle must not drive carelessly or inconsiderately on any occasion.

Procedures are in place to notify the Site Team of any faults identified with the minibus. Guidance notes on what to do in case of an accident are kept in the glove compartment of the minibus.

16. Supporting Pupils with Medical Conditions (also see the guidance on supporting pupils with medical conditions)

The school has a separate policy on the local arrangements for the administration of medicines and staff should make themselves familiar with the content of that document.

As a summary, Student Support staff will administer medicines and keep a record that they have been given. We must stress that students should not be at school if they are unwell and if at all possible, students should receive their medication at home.

For all medicines to be administered parents/carers should complete an annual consent form. Each time there is a variation in the pattern of dosage a new form should be completed. A new form should be completed for each medicines to be administered.

The smallest practicable dose should be brought into school in individual original containers, which should be clearly labelled with the student's name and dosage instructions.

Student Support staff will liaise with parents/carers on the development of health care plans, etc. when required and staff should ensure that they familiarise themselves with these documents.

17. Personal Protective Equipment (PPE) (also see the Personal Protective Equipment Policy)

PPE will be provided free of charge to all staff as required.

PPE means all equipment worn by staff or students which is designed to protect them from specified hazards. The need for PPE is identified through risk and/or COSHH assessments which will determine the suitable PPE to be used for each hazard and these are reviewed on an annual basis or as and when required. The school will provide employees and students who are exposed to a hazard at the school, which cannot be controlled by other means, with PPE where appropriate.

Staff and students will use the PPE provided, and care for it according to the instructions and training given. Supervising staff will ensure PPE fits the wearer properly. Where more than one item of PPE must be worn, the items should be compatible and remain effective.

Damaged PPE will not be used and will be disposed of in line with the manufacturer's instructions if it is not possible to repair. When not in use, PPE will be properly stored, kept clean, and in good repair.

18. Training and Information (also see the Health and Safety Training Policy)

A training needs analysis is undertaken by the Headteacher, through the Health and Safety Co-ordinator in conjunction with the Directors or Leaders of Learning, to identify the mandatory health and safety training required for each member of staff and this will be reviewed annually. The training will be identified by using the Children's Services Health and Safety Training Policy and the Headteacher will ensure that staff are released for this training.

All members of staff will receive a comprehensive health and safety induction when they commence employment with the school and the induction will include specific elements of this policy being brought to their attention. A volunteer will receive a specific induction relevant to the activities they are undertaking in school.

The Headteacher will:

- inform staff of any changes in the policy;
- assess the training requirements of the staff and integrate those needs onto the school development plan to inform governors;
- assess the training needs of new members of staff.

The school has developed guidance for supply teachers and this will be issued to all supply staff that includes health and safety information, evacuation procedures etc.

19. Monitoring Health and Safety

Health and safety standards must be monitored by the senior leadership team in conjunction with the school governors by the following:

- the Senior Leadership Team will include health and safety items as part of the agenda of their regular meetings;
- the Headteacher will arrange for an annual premises inspection with health and safety co-ordinator, nominated governor and trade union safety representative (where appointed);
- the governors' agenda as part of the Full Governing Body will have health and safety as standing agenda items.

19.1 Inspections

To maintain and improve standards throughout the school a formal premises inspection will be undertaken at least three times per year and records kept. The school will be inspected by the Health and Safety Co-ordinator in conjunction with the Site Manager.

The Health and Safety Governor shall be notified by the School when the inspections have taken place and will review the inspection checklists to ensure that these are being carried out, that they are effective and that issues raised are being resolved.

19.2 Auditing

As a means of confirming that the necessary systems to comply with legislation are in place and are being followed the Health and Safety team will complete a health and safety audit at least every 3 years. The action points identified through the audit will form part of the school development plan.

20. Visitors

The Headteacher and governors must accept the responsibility for health and safety of visitors to the school, including contractors.

All visitors to the school will be asked to sign in at the school Reception and sign out when they leave. Each member of staff will accept responsibility for their specific volunteers or visitors including checking that they are aware of emergency procedures and supervising their evacuation in case of an emergency.

Staff at Reception will ensure that volunteers also have the necessary safety information in line with East Sussex County Council's Voluntary Work Policy.

21. Trade Union Safety Representatives

Trade unions can appoint safety representatives who are legally entitled to inspect premises, investigate accidents and undertake safety training.

The trade union safety representative will consult the Headteacher on any relevant health and safety matters.

22. Health and Safety Policy Monitoring and Review

The school acknowledges that the Health and Safety Policy is a working document that includes details of policy and procedures relating to health and safety issues.

The school will constantly monitor and update the policy as appropriate and will undertake a formal review on an annual basis seeking endorsement from the Governing Body.

Monitoring of the policy will be via spot checks, scheduled safety inspections, audits, management reports or accident investigations.

This policy is supplemented by the following local documentation (available in school, on request):

- Crisis Management Plan
- Supporting Pupils with Medical Conditions Policy
- Offsite Visits Policy

And with reference to the following ESCC adopted policies and guidance:

Fire Safety Policy

First Aid Policy

Incident Reporting and Investigating Policy

No Smoking at Work Policy

Drugs and Alcohol at Work Policy

Stress Management Policy

Pregnancy, Childbirth and Breastfeeding: Risk Management Policy

Communicable Diseases Policy

Risk Assessment Policy

Asbestos Management in the Workplace Policy

Legionella Policy

Contractor Management Policy

Guidance for schools on Security

Display Screen Equipment Policy

Electricity at Work Policy

Work Equipment Policy

Manual Handling Operations Policy

Work at Height Policy

Workplace Health, Safety and Welfare Policy

Violence and Aggression at Work Policy

Lone Working Policy

Work Experience Policy
Control of Substances Hazardous to Health (COSHH) Policy
Personal Protective Equipment Policy
Health and Safety Training Policy

Appendix 1

List of Useful Contacts in School

Contact Details for the personnel below, are available in school

Headteacher
Deputy Head
Health and Safety Governor
Health and Safety Co-ordinator (Business Manager)
Site Manager
Trade Union Safety Representative
Health and Safety Committee Members
Educational Visits Co-Ordinator
Teacher in charge of the Library
Associate Assistant Head with responsibilities for CEIAG
Careers and Work Experience Administrator
Radiation Protection Supervisor
Student Support Manager /First Aid Co-ordinator
Display Screen Equipment assessor

First Aiders (First Aid at Work qualified)

Rosie Beddows
Suzy Ray
Roger Worrall
Suzanne Pritchard
Amanda Worrall

DATE	COMMENTS	RESPONSIBLE	REVIEW DATE
01/12/2022	Submitted for review & approval by the Full Governing Body	AWE/CET	Autumn Term 2023
December 2022	To be ratified at FGB and signed by the Chair of Governors – Jane Branson	JBR	Autumn Term 2023